



A New Gold Producer With Bite

TSX:CRK
OTCQX:CROCF
FRANKFURT:XGC

JUNE 2010

Disclaimer

Forward Looking Statements



This presentation contains forward-looking statements under Canadian securities legislation. Forward-looking statements include, but are not limited to, statements with respect to the development potential and timetable of the projects; the Company's ability to raise additional funds as necessary; the future price of gold; the estimation of mineral resources; conclusions of economic evaluation (including scoping studies); the realization of mineral resource estimates; the timing and amount of estimated future production, development and exploration; costs of future activities; capital and operating expenditures; success of exploration activities; mining or processing issues; currency exchange rates; government regulation of mining operations; and environmental risks. Generally, forward-looking statements can be identified by the use of forward-looking terminology such as "plans", "expects" or "does not expect", "is expected", "budget", "scheduled", "estimates", "forecasts", "intends", "anticipates" or "does not anticipate", or "believes", or variations of such words and phrases or statements that certain actions, events or results "may", "could", "would", "might" or "will be taken", "occur" or "be achieved". Forward-looking statements are based on the opinions and estimates of management as of the date such statements are made. Estimates regarding the anticipated timing, amount and cost of mining at the projects are based on assumptions underlying mineral resource estimates and the realization of such estimates; results of previous mining activities at the projects, and detailed research and analysis completed by independent of the Company; research and estimates regarding the timing of delivery for long-lead items; knowledge regarding the factors consultants and management involved in building a mine and other factors that will be described in the technical report summarizing the scoping study that will be filed under the profile of the Company on SEDAR. Capital and operating cost estimates are based on results of previous mining activities, research of the Company and independent consultants, recent estimates of construction and mining costs and other factors that are set out in the scoping study. Production estimates are based on mine plans and production schedules, which have been developed by the Company's personnel and independent consultants. Forward-looking statements are subject to known and unknown risks, uncertainties and other factors that may cause the actual results, level of activity, performance or achievements of the Company to be materially different from those expressed or implied by such forward-looking statements, including but not limited to risks related to: timing and availability of external financing on acceptable terms; unexpected events and delays during construction, expansion and start-up; variations in ore grade and recovery rates; receipt and revocation of government approvals; actual results of exploration and mining activities; changes in project parameters as plans continue to be refined; future prices of gold; failure of plant, equipment or processes to operate as anticipated; accidents, labour disputes and other risks of the mining industry. Although management of the Company has attempted to identify important factors that could cause actual results to differ materially from those contained in forward-looking statements, there may be other factors that cause results not to be as anticipated, estimated or intended. There can be no assurance that such statements will prove to be accurate, as actual results and future events could differ materially from those anticipated in such statements. Accordingly, readers should not place undue reliance on forward-looking statements. The Company does not undertake to update any forward-looking statements except in accordance with applicable securities laws.

Investors are advised that National Instrument NI 43-101 of the Canadian Securities Administrators requires that each category of mineral reserves and mineral resources be reported separately. Mineral resources that are not mineral reserves do not have demonstrated economic viability.

Cautionary Note to U.S. Investors Concerning Estimates of Measured, Indicated or Inferred Resources

The information presented uses the terms "measured", "indicated" and "inferred" mineral resources. United States investors are advised that while such terms are recognized and required by Canadian regulations, the United States Securities and Exchange Commission does not recognize these terms. "Inferred mineral resources" have a great amount of uncertainty as to their existence, and as to their economic and legal feasibility. It cannot be assumed that all or any part of an inferred mineral resource will ever be upgraded to a higher category. Under Canadian rules, estimates of inferred mineral resources may not form the basis of feasibility or other economic studies. United States investors are cautioned not to assume that all or any part of measured or indicated mineral resources will ever be converted into mineral reserves. United States investors are also cautioned not to assume that all or any part of an inferred mineral resource exists, or is economically or legally mineable.

Investment Advantage

Production of 100,000 oz in 2010 *growing to*
Production of +200,000 oz in 2011

June 1, 2010 Commercial Production

Australian Dollar Gold Price at 1 Year High **+A\$1450/oz**

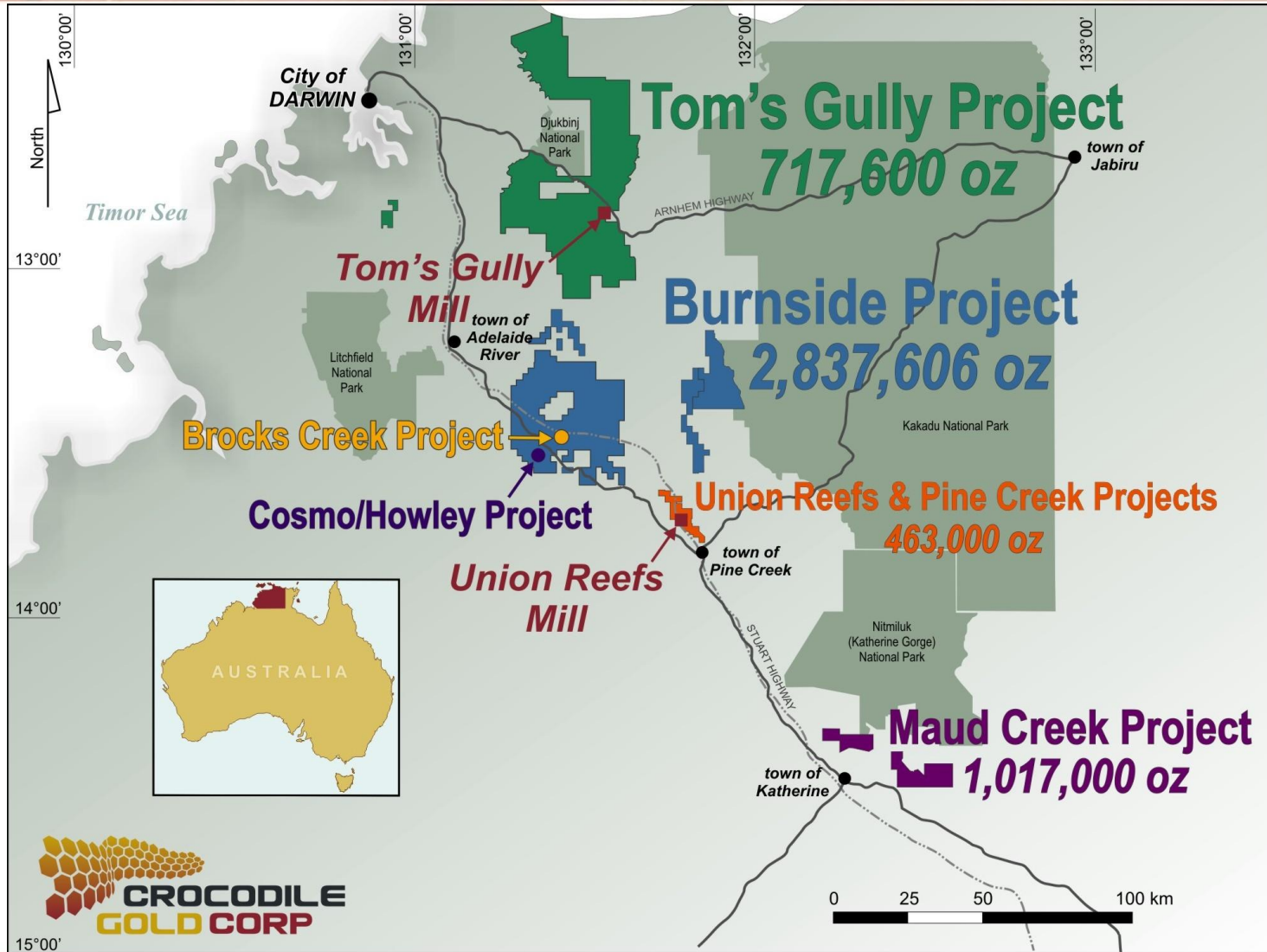
Outstanding potential to discover additional resources



First World Assets



A Major Emerging First World Gold Camp



Initial Operating Strategy

Define Large Reserve and Resource Base

Most previous drilling shallow

Focus near critical mass of reserves and resources

Cosmo/Howley corridor

Build new mill at Cosmo/Howley

Lower costs/Increase cash flow

Systematically expand production



Report Card Q1 2010 1 Year Later



**Define Large Reserve
and Resource Base**

Increasing resources for US\$6/oz

**Focus near critical mass of
reserves and resources**

Cosmo/Howley corridor

**Build new mill at
Cosmo/Howley**

Completing feasibility study

**Systematically expand
production**

On schedule



AUS Dollar Gold Price +\$200 Increase in Last Month



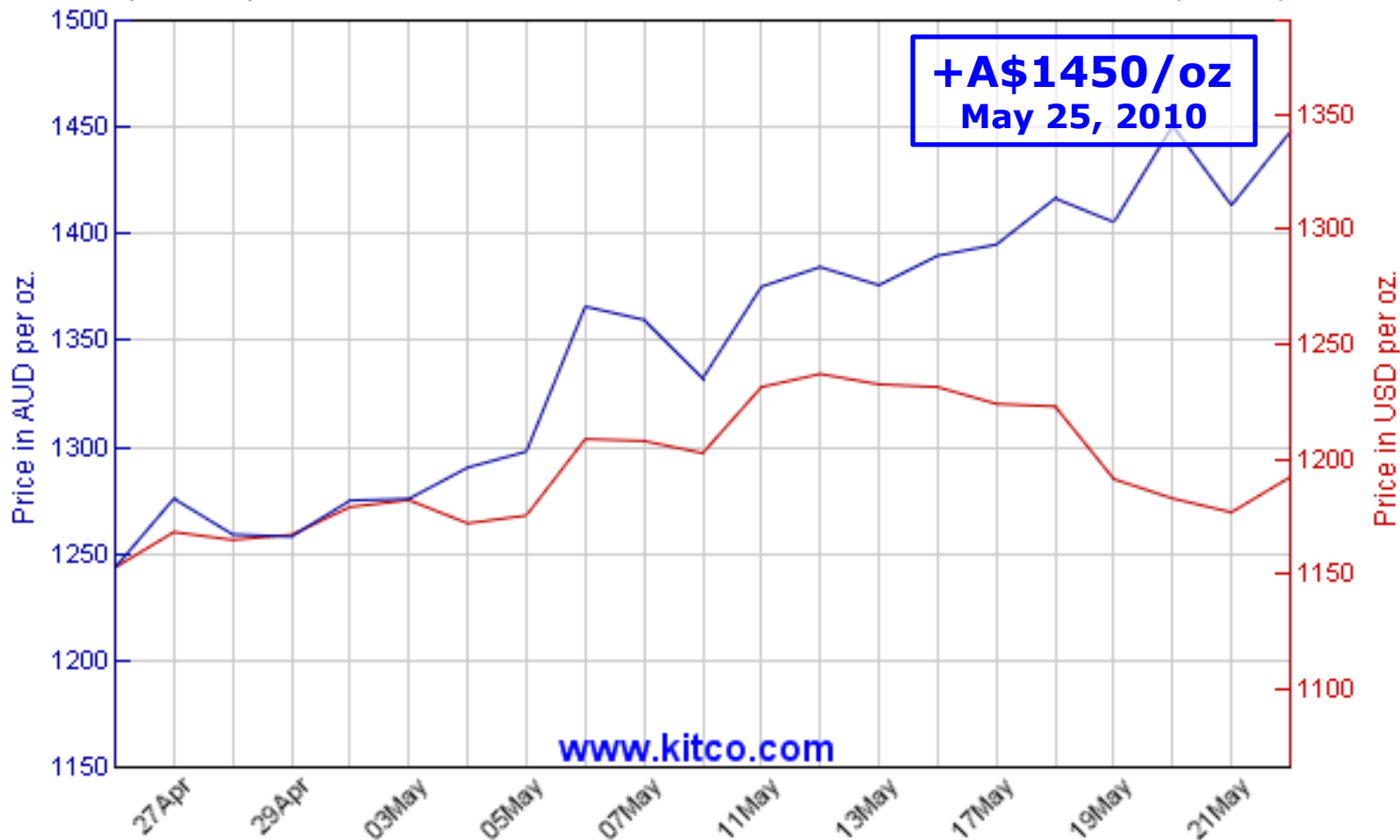
TSX:CRK

30 Day Spot Gold in Australian Dollars vs US Dollars

1447.81 AUD ▲
+204.18(+16.42%)

(Change calculation is from the start of the chart)

1192.30 USD ▲
+39.30(+3.41%)



Mineral Reserves & Resources



NI 43-101 RESOURCES

	Tonnes (million)	Grade (g/t)	Gold ounces (million)
Measured & Indicated*	42.9	2.3	3.09
Inferred	26.7	2.3	1.94

NOTES:

- * Includes probable reserves of 545,000 oz at 4.5 g/t
- Iron Blow inferred resource also contains: 10 million oz Ag, 53 million lbs Pb, 230 million lbs Zn, 13 million lbs Cu
- Calculated at a gold price of AUS\$750 per ounce

Our Assets



TSX:CRK

Production

Howley

- open pit mine

Brocks Creek

- high grade underground mine

North Point

- open pit mine
- oxide, low strip ratio

Development

Tom's Gully

- high grade underground mine
- production expected late Q3 2010

Cosmo

- underground mine
- production expected mid-2011

Mills

Union Reefs Mill

- 2.4 mtpy
- in operation

Tom's Gully Mill

- 240,000 tpy
- expected to restart during Q3 2010

Exploration Potential >2,500 km²

2010 Production Guidance – Revised

Short Term Pain – Long Term Gain



Mine	Tonnes	Grade (g/t)	Recovery	Ounces (Au)
Howley	1,363,000	1.5	90%	55,600
North Point	300,000	1.8	90%	15,700
Brocks Creek	89,000	8.1	90%	21,000
Tom's Gully	48,000	6.6	75%	7,700
Total	1,800,000	2.0	90%	100,000

Cash Costs	US\$700/ounce
Remaining 2010 Capital Expenditures (including exploration May-Dec)	US\$44 million
Exploration (May-Dec)	US\$15 million

Current Operating Status



Throughput at target levels

Predicted grade reconciling close to mill

Recoveries near target levels

Brocks Creek – thicker, higher grade to depth

Howley – lower strip ratio, high grade opportunity

Mill Feasibility Study



TSX:CRK

Current Union Reefs Mill Capacity

**2.4 mtpy or
150,000 oz/yr**

Proposed New Cosmo Mill Capacity

**Initial: 1.5 mtpy
Expandable to: 3.0 mtpy**

Total Mill Capacity with both mills

**3.9 – 5.4 mtpy or
250,000 – 450,000 oz/yr**

Preliminary capex for 1.5 mtpy mill

\$A80 million

Preliminary capex for expansion to 3.0 mtpy

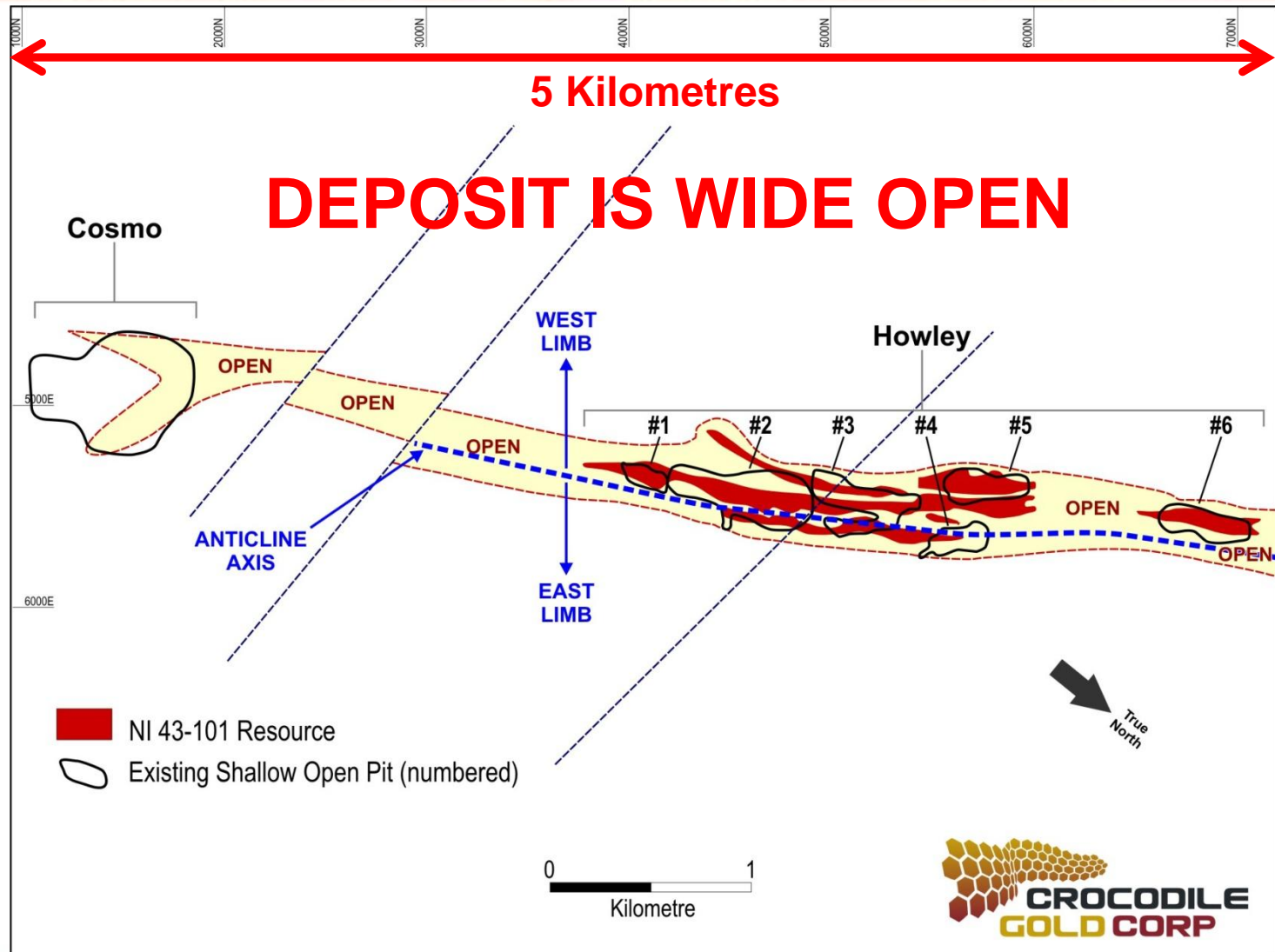
\$A20 million

New mill offers potential of lower operating costs

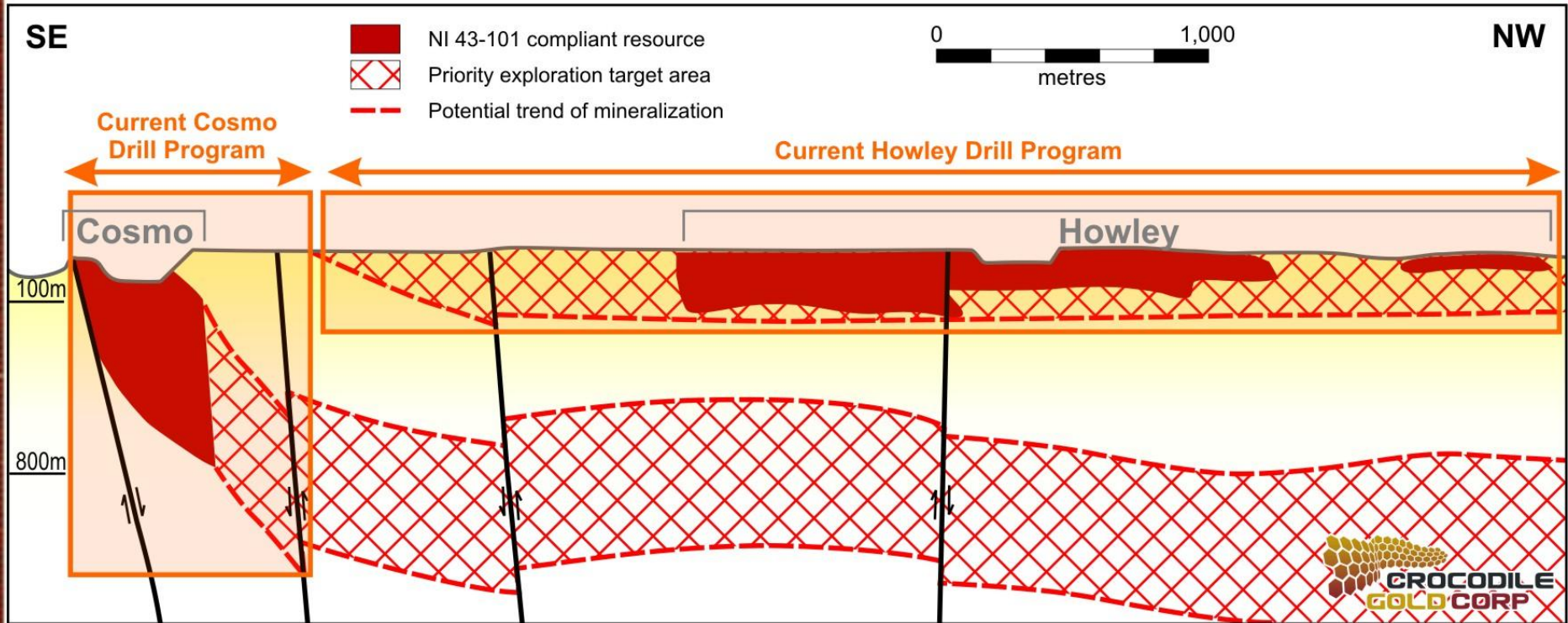
1) Lower haulage costs

2) Potential for lower grade resources to be economic

Cosmo/Howley – Plan View A Very Big System



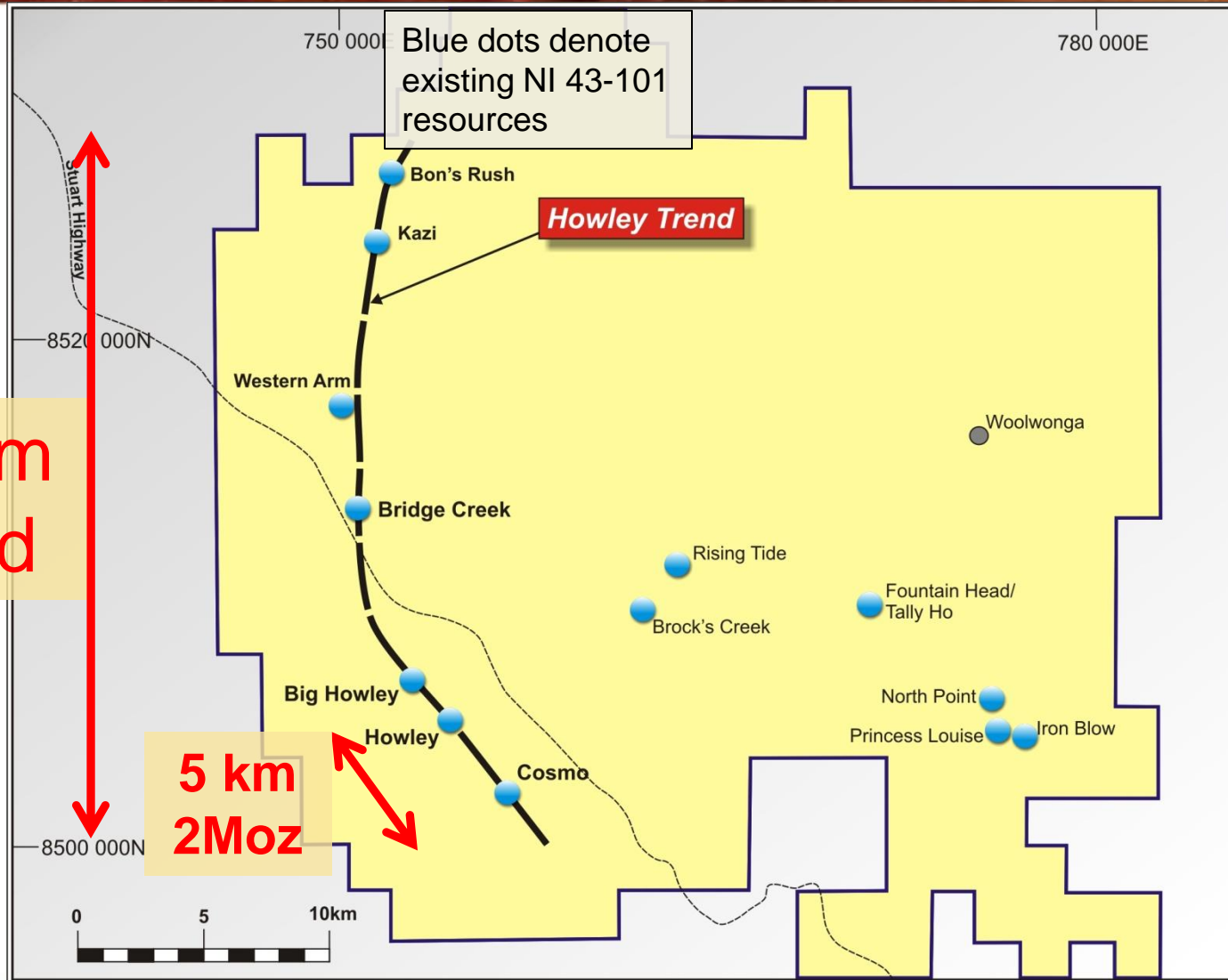
Cosmo/Howley Potential



5 Kilometres

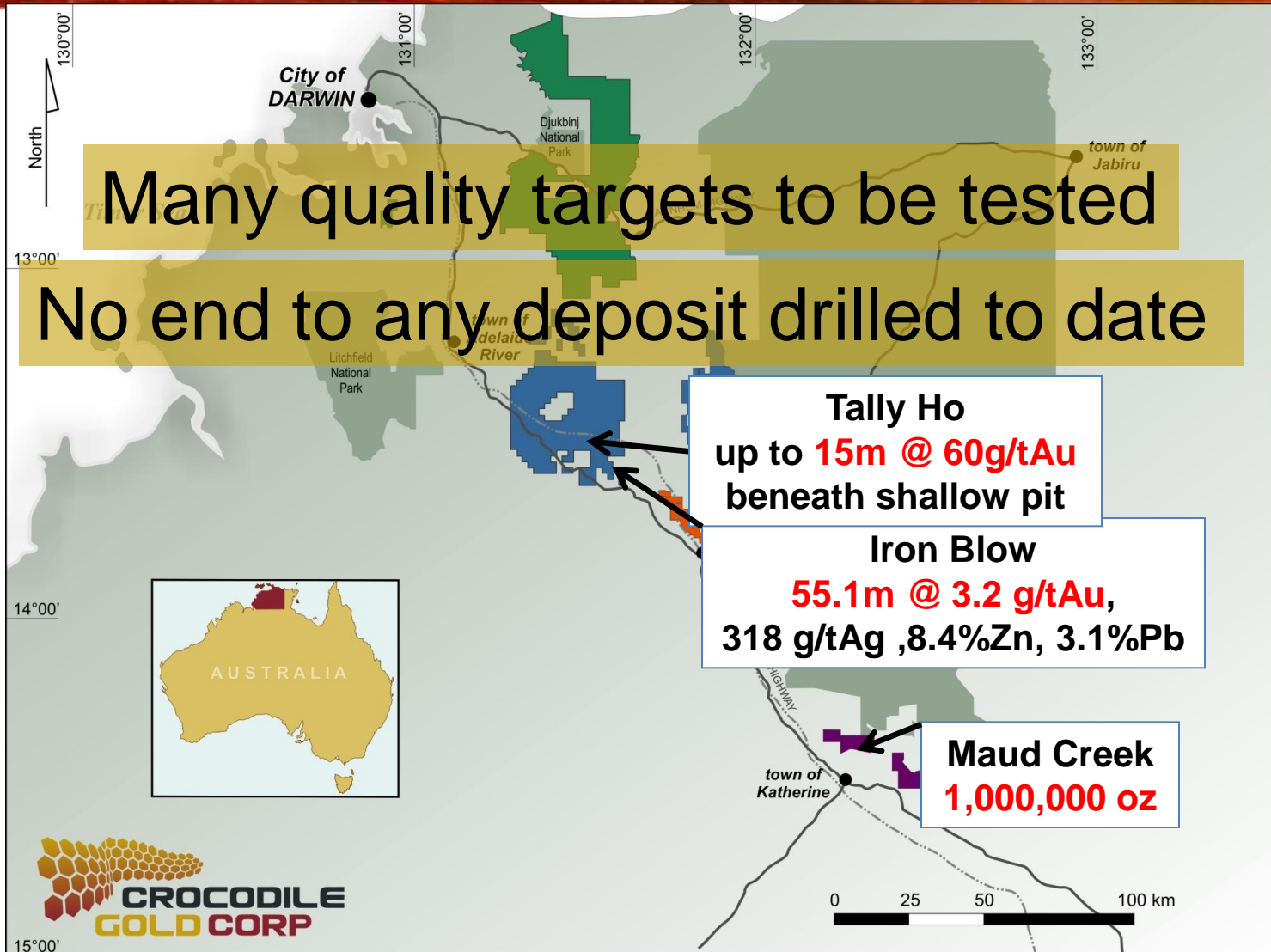
DEPOSIT IS WIDE OPEN

25 Kilometres of Potential



Long Term Plan

Exploring a Mining District



What does the market pay?



Junior Producers

US\$200 / oz Au

Crocodile Gold

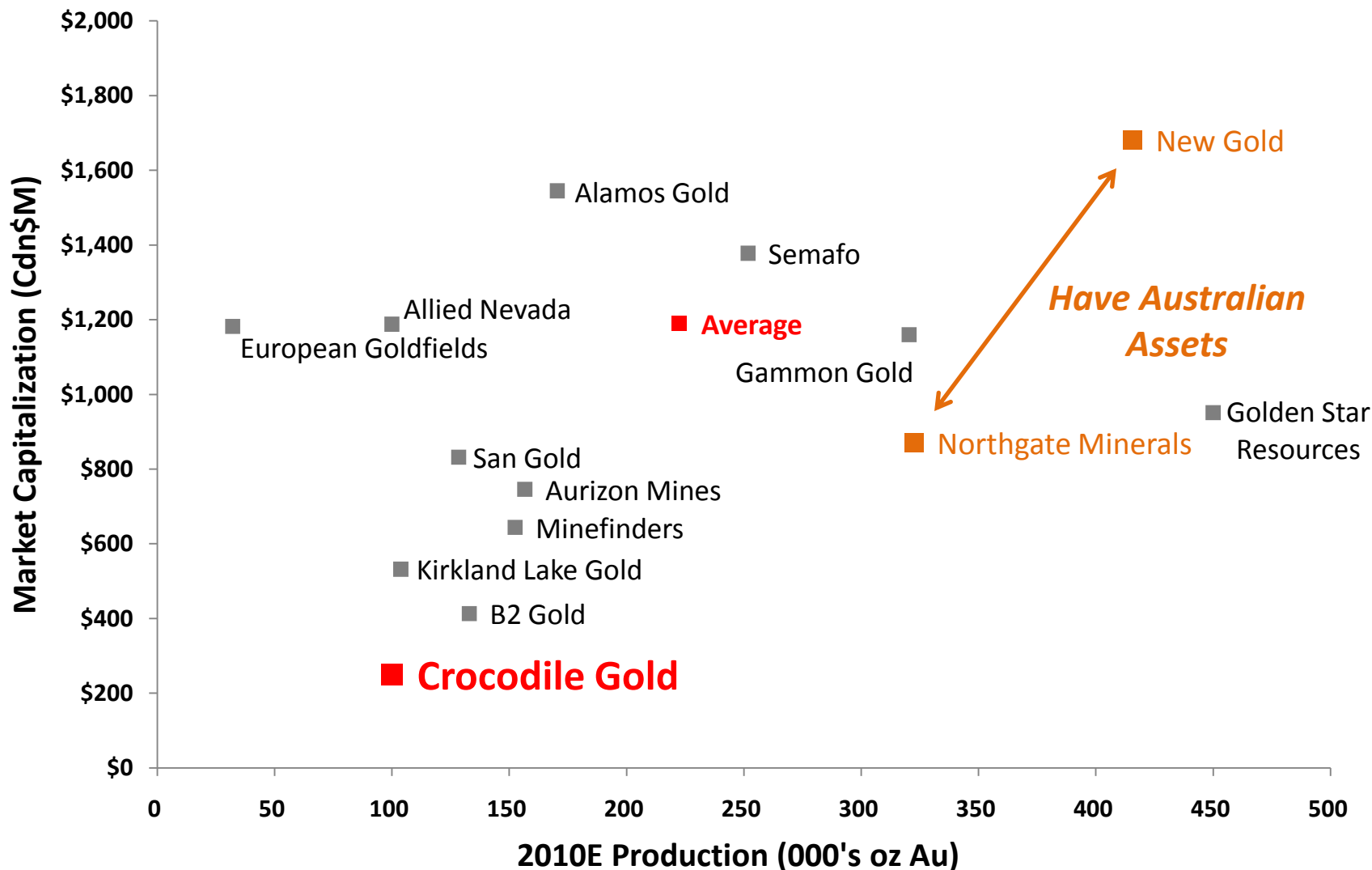
US\$50 / oz Au

We are undervalued

Undervalued when compared to Junior Producer Peers



TSX:CRK



Longer Term Strategy



Crocodile Gold's
longer term
yearly conceptual
production target

+500,000
oz/yr

Crocodile Gold's
longer term
conceptual
resource base goal

10 Moz

Management & Board



Management

Mike Hoffman, P.Eng.

President and Chief Executive Officer

David Keough

Chief Operating Officer

Brad Boland

Chief Financial Officer

Board of Directors

Stan Bharti, P.Eng.

Chairman

Mike Hoffman, P.Eng.

Bruce Humphrey, P.Eng.

George Faught

Greg Cameron

Capital Structure

Share Structure (at April 29, 2010)

TSX:CRK

Shares Issued & Outstanding	185,018,609
Warrants	22,518,534
Options	11,075,281
Fully Diluted	218,612,424
Market Capitalization (at June 1, 2010)	\$250 million

Analyst Coverage

Mike Kozak	Cormark Securities
Gary Baschuk/Mike Starogiannis	Fraser Mackenzie
Forbes Gemmell	Raymond James
Brian Mok	Union Securities

Major Shareholders

Resolute

Luxor

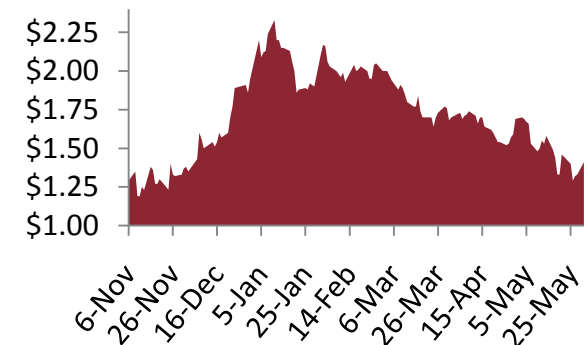
Acuity

Libra

RBC

Fidelity

Management & Insiders



Investor Contact Info



For additional information contact:

Mike Hoffman

President and CEO

416-861-2964

mhoffman@crocgold.com

or

Ashleigh Clelland

Manager, Investor Relations

416-861-5899

aclelland@crocgold.com

www.crocgold.com



Appendix

Conceptual Cosmo/Howley

Cross Section



TSX:CRK

